

Company Profile



Company Name: Computer Mind Co.,Ltd.

[Head Office]

5th floor of Ohmiya Miyazakidai Building
2-10-9 Miyazaki, Miyamae-ku, Kawasaki-shi, Kanagawa 216-0033
Phone:+81-44-856-9922

[Okinawa Branch]

4th floor of Nissay Naha Building, 3-1-1 Kumoji, Naha City, Okinawa 900-0015
Phone:+81-98-868-9922

[Ogikubo Satellite]

4th floor of Ogikubo SY Building, 2-4-4 Amanuma, Suginami-ku, Tokyo 167-0032
Phone:+81-3-5347-9966

Homepage Address: <https://www.cmind.co.jp> (Japanese only)

Established: March 30, 1978

Capital amount: 35,000,000 yen

President and CEO: Takeuchi Jiro

Number of employees: 38 (As of Mar 31, 2020)

Number of Consolidated Subsidiaries: 1 (Computer Mind Energy 1 Co.,Ltd.)

Main customer: NEC Group, Fujitsu Limited

Bank:

Mizuho Bank, Nakameguro Branch
Sumitomo Mitsui Banking Miyazakidai Branch
Kiraboshi Bank Noborito Branch
Chamber of Commerce Kawasaki Branch
Yokohama Bank, Mizoguchi Branch
Kawasaki Shinkin Bank, Miyamaedaira Branch

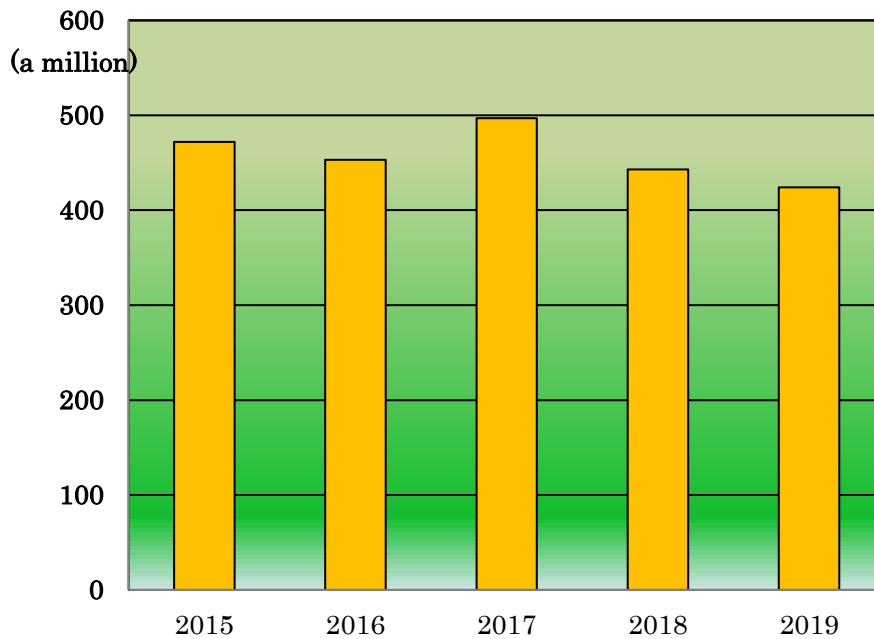


ISO IEC 27001:2013 /JIS Q 27001:2014
認証登録番号 IS 552522



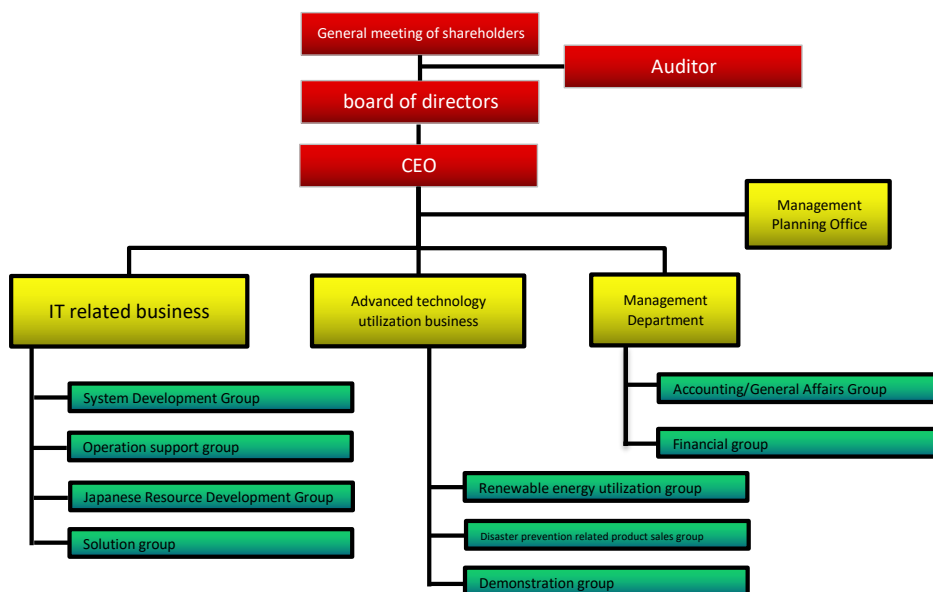
JIS Q 15001
個人情報保護
マネジメントシステム
PIMS 629903
(JIS Q 15001:2017)

Sales trends



Officers and organizations

Director Takeuchi Jiro, President and CEO
 Matsuzawa Kenichi, Senior Managing Director
 Ogiso Yuka, Managing Director
 Azuma Tokisei, Director
Auditor Oba Mamoru



CEO message



Our main businesses are information system development, technical support, computer classroom service, and new energy business.


Customer trust is the greatest asset in providing such intangible services.

We aim to become a company that can contribute to the world by focusing on the acquisition of the latest technology and human resource development.

March 2020 Takeuchi Jiro, Representative

History

- | | | |
|-----------|------|--|
| March | 1978 | Established ComputerMind Co., Ltd. in Meguro-ku, Tokyo, whose main business is to dispatch software development engineers. |
| October | 1981 | Started support for development of a total newspaper editing system |
| June | 1999 | Start of technical support center operations for the total newspaper editing system. |
| July | 2005 | Publicly listed after being designated as a green sheet stock by the Japan Securities Dealers Association. |
| April | 2006 | Established “Okinawa Branch office” in Naha city, Okinawa prefecture, and moved total newspaper editing system technical support center from head office to Okinawa. |
| March | 2007 | Started Japanese resource management business. |
| February | 2008 | Opened “Ogikubo Satellite office” development center in Suginami Ward, Tokyo. |
| October | 2009 | [Information security 27001:2005 / JIS Q 27001:2006] acquisition.
Certification registration number IS 552522 |
| February | 2011 | [Privacy mark / JIS Q 15001:2006 compliant] acquisition.
Certification registration number 10823775 |
| August | 2012 | Relocation of “Ogikubo Satellite office” to expand development work. |
| October | 2012 | [IT service 20000:2005 / JIS Q 20000:2007] Acquired at Okinawa Branch office.
Certification registration number ITMS 586208 |
| October | 2013 | Started third-party verification business at “Okinawa Branch office” . |
| September | 2014 | Sarted renewable energy utilization business. |
| February | 2015 | [Personal information protection JIS Q 15001:2006] acquisition.
Certification registration number PIMS 629903 |

- July 2015 Moved “Okinawa Branch office” and expanded development operations.
- May 2016 Established Computer Mind Energy 1 Co., Ltd. (100% investment) in Naha-City, Okinawa Prefecture for the purpose of power generation and power sales business using solar energy.
- June 2016 Listed on Tokyo Stock Exchange TOKYO PRO Market (stock code: 2452) 
- February 2017 Computer Mind Energy 1 Co., Ltd. “KATSURAGI Solar Park” (932kW Katsuragi-Cho, Ito-gun, Wakayama) The first phase of construction was completed and power generation and sales started.
- September 2017 Computer Mind Energy 1 Co., Ltd. “KATSURAGI Solar Park” (356kW Katsuragi-Cho, Ito-gun, Wakayama) The second phase construction was completed and power generation and sales started.
- August 2018 “Shiba Daimon Satellite office” opened in Minato-ku, Tokyo.
- September 2019 Transferred Computer Mind Energy 1 Co., Ltd.’s “KATSURAGI Solar Park” (Katsuragi-Cho, Ito-gun, Wakayama Prefecture).
- November 2019 Start evaluation of “distress search tool” to protect human lives.
- July 2020 Integrated “Shiba Daimon Satellite office” into “Ogikubo Satellite office” .

Management philosophy

We will appropriately and swiftly respond to changes in the business environment, technology, people and economy of the times, and promote management aiming to be a company that contributes to people and society.

Basic policy and goals for human resource development

Based on the basic recognition that we can flexibly respond to the technology and environment of the times, we believe that our ideal human resources are as follows.

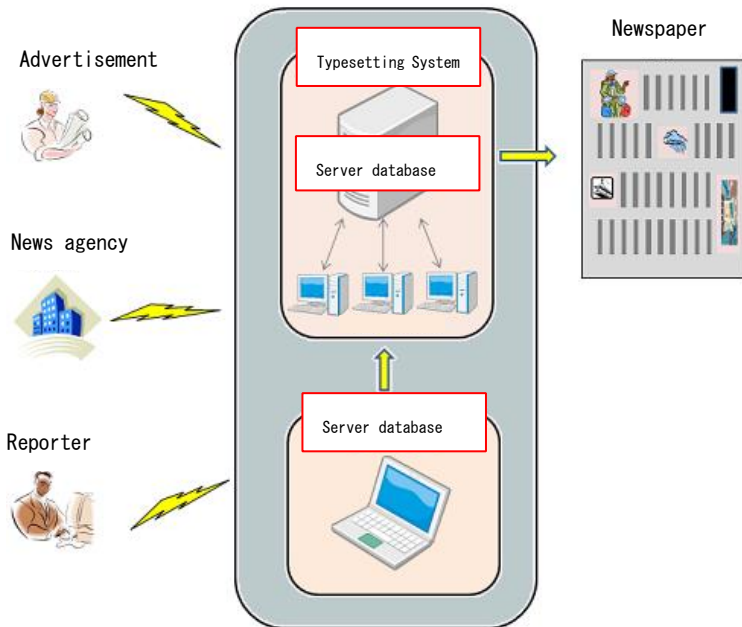
- (1) Employees who understand the management philosophy/policy and can empathize with it and work independently.
- (2) Employees with passion and dreams, who can carry out their work in good faith.
- (3) Employees who can accurately sense customer needs, think about the best method, act, and propose.
- (4) Employees who can flexibly respond to technological innovation as a professional group.
- (5) Employees who have clear goals to improve their own work performance and skills and continue to challenge the skill development required by the company.
- (6) Employees who can communicate with their bosses, colleagues and juniors and contribute to revitalizing the workplace.

In promoting human resource development, we recognize that employees have a proactive attitude toward capacity development and that the effect will be even greater, and we will continue to raise awareness while relating to treatment and placement. We will actively work on capacity development.

As concrete measures, while clarifying the needs of the company and individuals, the three elements of “OJT”, “OFF-JT” and “self-development” are systematically and stepwise combined to form an “education system diagram” and “annual education and training”. We will formulate a “plan” and execute it to achieve synergistic effects.

Introduction of main business

System development



Newspaper editing system server total development

Articles and images sent to the Total Newspaper Editing System are stored in a database and automatically formatted. It also controls the data from the edit layout terminal that edits newspaper pages. We develop and maintain a typesetting server for editing newspapers.

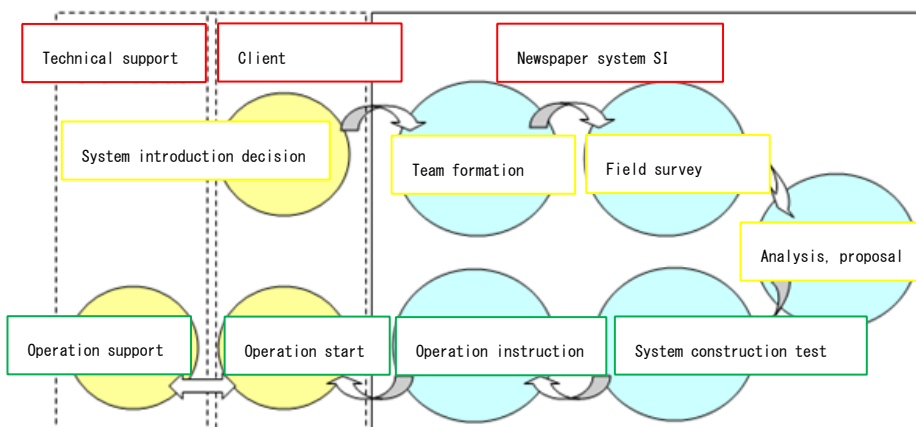
Development of election system

The election system automatically formats the national and local election data for each local government and publishes the data from reporters and news outlets. We develop and maintain this election system.

General development

We provide services such as aerial image display application development, aerial laser measurement data analysis application development, and mobile terminal application development.

Newspaper system integration

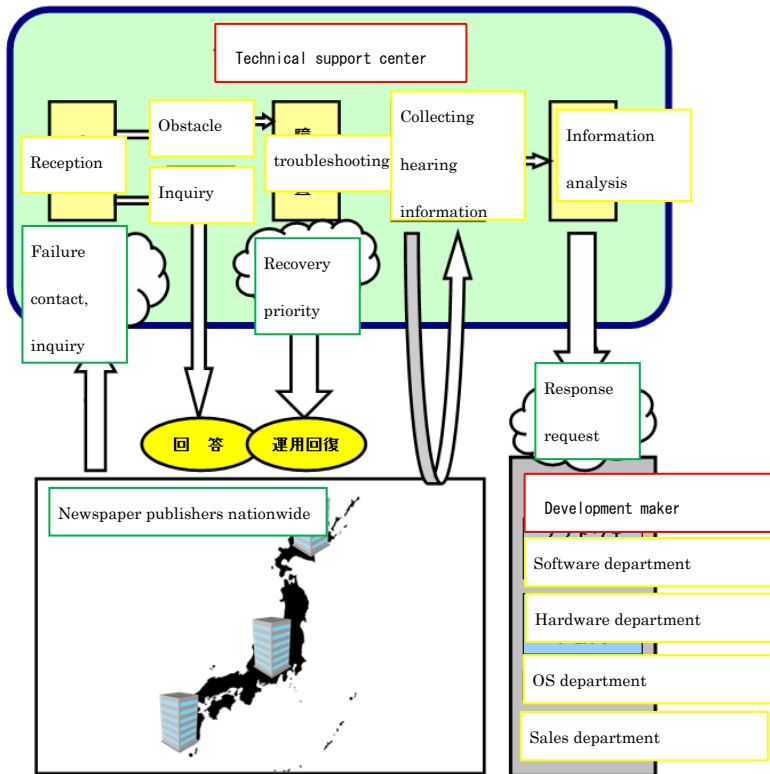


By introducing/migrating the system of each newspaper company, customers can use it safely and safely from surveying the local environment to starting operation. In short, we provide a team that can provide the best technology.

Main tasks include field surveys, work content analysis/planning, system introduction, and operational guidance to customers.

After the introduction, operational support will continue to be supported by our dedicated technical support center.

Technical support



It is a technical service of "Total Newspaper Editing System" which has been well received since receiving an order in 1999.

We support newspaper publishers nationwide from 9:00 to 26:00 364 days.

We have established a technical support center to support the maintenance and operation of the total newspaper editing system we have been involved in.

We will respond appropriately to technical inquiries from newspaper publishers nationwide and trouble occurrences to support the smooth publication of newspapers.

Technical support

Japanese resources are Japanese contents (dictionaries, character fonts, etc.) used in system applications. The Japanese Resource Development Group makes full use of a wealth of knowledge and experience in national languages, kanji, and character codes to make various proposals related to Japanese content and the following tasks.

- Word dictionary creation (corresponding to various dictionaries such as general words/special words/similar words)
- Kanji attribute dictionary creation (reading, radicals, stroke count, variant characters, components, etc.)
- Character font creation (outline/dot)
- Character identification



We will talk about what you want to do and what you want, and together we will discuss the optimal data and creation policy.



We will work closely while keeping in touch with us regarding any additional requests or problems.



We will deliver in the desired format.

- Dictionary data
- Font writing data
- Character identification result list
- Attribute creation report

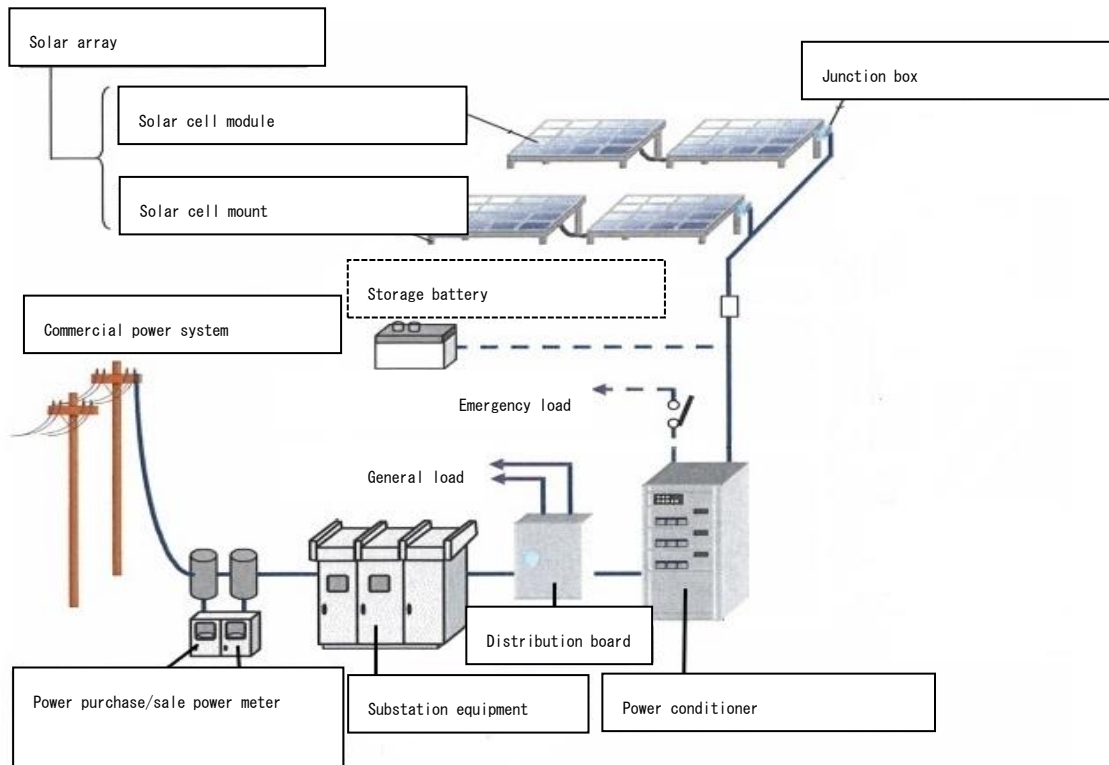
Computer school

We have opened a computer school for middle-aged and elderly people in Ogikubo, Tokyo.
(Fujitsu Open College Ogikubo School)

Utilization of renewable energy

We are collaborating with E-light Co., Ltd. on system research such as power generation management of renewable energy systems, automatic restoration processing by system abnormality monitoring, and project management related to solar power generation.

【構成例】



Source: Solar Power Association

[“KATSURAGI Solar Park” Phase I Phase II Operation]



Power generation: 1,288.9KW Area: 14,185 m²

The “KATSURAGI Solar Park” Phase I construction in Katsuragicho Wakayama Prefecture was completed on February 2017,

Phase II construction completed on September, 2017 and started operation.

Disaster prevention related product sales

We are collaborating with Telenet Co., Ltd. to release a "dedicated disaster prevention radio (hazard talk)" that makes it easy to call even in the event of a disaster and can receive disaster information such as earthquake early warning more accurately than a mobile phone or TV. We are selling a "disaster victim search tool (Search Me)" that enables a wide range of searches using the base unit even when a ship is in distress.

[Function of wireless device with emergency disaster information (hazard talk): Only in Japan]

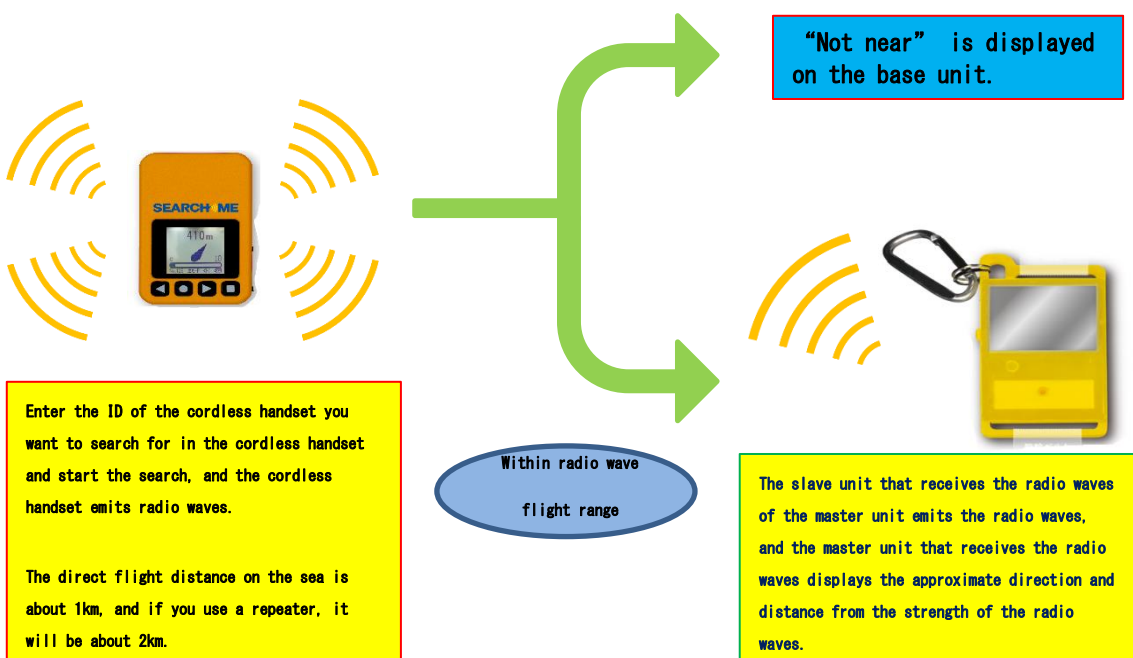
On mobile phones and smartphones, only alert sound is played as a wide-range bulletin, but on DEWS (dis), the size of the characteristic shaking at the hazard talk terminal point and the grace time are indicated by "alert sound" "reading voice guidance" "text" Broadcast enters from the terminal.



■ Advanced Earthquake Early Warning ■ Tsunami warning ■ Missile launch, Terrorist information/weather warning ■ Landslide disaster/river flood forecast/warning

[Marine Victim Search Tool (Search Me) Functions]

searchme



Low-temperature Thermal Decomposition System (Duster4D)

We, in cooperation with E-light Co., Ltd., provide a compact, portable and environmentally friendly low-temperature decomposition furnace that can handle drifting and drifting waste without constructing a medium-sized or larger waste incinerator.

Duster4D

Not an incinerator, Low-temperature thermal decomposition furnace Duster4D.



1. Fuel and electricity are not necessary.
2. Disposal cost of waste is not necessary.
3. If it is flammable waste, sorting is not necessary.

What's Low-temperature thermal decomposition furnace?



Valves installed at gas injection ports



The initial state of inside of the furnace

- It is capable of processing burnable waste without using a supplemental fuel, and the structure is environmentally friendly.
- It can be pyrolyze by adjusting the amount of inflow of specially magnetized air.
- It reliably avoids the decomposition temperatures at which dioxins and NOx generate in large quantities by decomposing waste at low temperature and low oxygen.
- It is available not only for household garbage of various facilities such as hospitals, factories and supermarkets and of an isolated island, but also for drifting garbage, waste ship (FRP is also available) and fishing net etc.
- Due to low temperature treatment, the main unit has excellent durability.
- Because the unit is compact, low cost and can be installed according to quantity of waste, setting up equipment installation plan is easy, so it doesn't require excessive capital investment.
- The amount of ash after treatment decreased to about 1/200 of the introduced amount. The ash is removed while maintenance.
- Due to double structure, heat insulation effect is excellent. Outside temperature of the furnace doesn't rise to dangerous temperature to the human body.